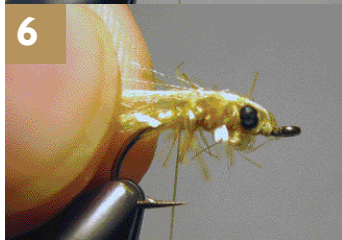
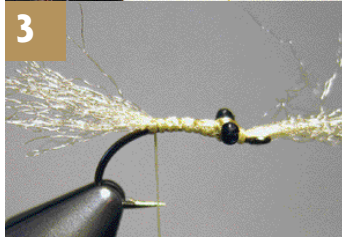
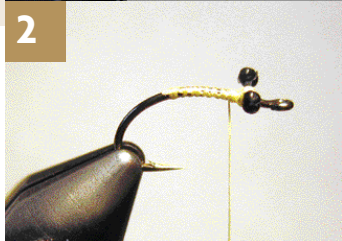


# Antron Steelhead Bug

**Hook:** Kamasan B420 #14 - #10 or equivalent Larvae Hook  
**Thread:** Uni 8/0 Light Cahill  
**Eyes:** Plastic or Burnt monofilament  
**Tail:** Tan Antron Yarn  
**Wing Case:** Tan Antron Yarn  
**Body:** Petite Estaz Golden Olive

## Tying Instructions

1. Place the hook in the vice and attach thread. Position the thread at a point about 2 hook eye widths from the front of the hook
2. Using crossing wraps of thread secure a pair of burnt mono or plastic nymph eyes to the hook shank.
3. Take a strand of antron yarn and tie it in across the top of the hook shank. It should extend about two hook lengths in front of the eye of the hook and one hook shank length past the bend of the hook.
4. Attach the Petite Estaz just behind the eyes and wind the thread to the bend of the hook. Leave the thread at the bend of the hook.
5. Wrap the Estaz back to the bend of the hook and tie it off.
6. Fold the antron that was extending in front of the hook eye over the back of the fly as a wing case.
7. Tie in the wing case at the bend of the hook and tie off. Then trim the "tail" so it is tapered and does not end in a blunt end.



The Antron Bug can be tied in a variety of colors. However, I have had my best luck with light tan, peach and white. It is surprising that such a small fly can produce big results with pressured steelhead.

Nymph eyes are an important element in this fly. If you wish you can substitute burn monofilament eyes. Dipping them in black lacquer will make the eyes darker.

Divide the antron yarn strand in half, a full strand is too thick for most antron bugs. Notice that it was also secured in front of the eyes right up to the hook eye.

Wrapping the Estaz the full length of the hook shank will make the body full and avoid the creation of a bump at the hook bend.

Tying off the materials at the hook bend is "backwards" compared with most flies, but it is quite effective for this type of fly.

The full length wing case is very similar to the "Michigan Wiggler" which uses squirrel tail over a chenille and hackled body. but this pattern does much better with picky, clear-water steelhead.

Tying off at the hook bend will take some practice. half hitches are good for securing the thread and a hand whip finish is also effective. The tapered tail looks more natural with this pattern.



Fly tied by Stephen May  
For more information contact  
Grand River Troutfitters  
(519) 787-4359  
[www.grandrivertroutfitters.com](http://www.grandrivertroutfitters.com)